

DATA PAQ
DATA PAQ
DATA PAQ
DATA PAQ

DATA PAQ Wave Solder Analysis Pallet

Easy, Accurate Measurement of Your Wave Solder Process

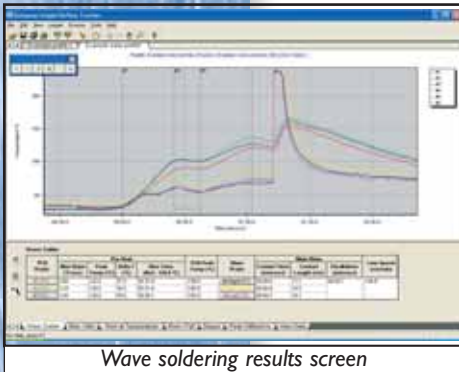


CS3070 Pallet with logger

The newest DATA PAQ innovation now allows you to analyze the most critical parameters of your Wave Solder process without expensive and complicated tools. Using the Datapaq Wave Solder Analysis Pallet, you can adapt your Reflow Tracker System to get accurate, repeatable wave process information. Insight™ Software can then be used to analyze data from both Wave and Reflow processes, ensuring compatibility of data throughout the factory and minimizing operator training needs.

You can view all the critical wave process parameters in one easy-to-read table. The wave, chip wave (if present) and pre-heat data will all show, together with the temperature profile graph.

The system is rugged and reliable, and ensures accuracy and repeatability without the expense of a dedicated wave analyzer.



Wave soldering results screen

Wave Solder Features of Insight Software:

The Datapaq wave system enables you to profile the entire wave process.

Pre-heat analysis includes:

- Maximum slopes
- Rise times
- Maximum temperature in the pre-heat zone
- Delta t at the wave
- Maximum temperature over the wave

Wave analysis includes:

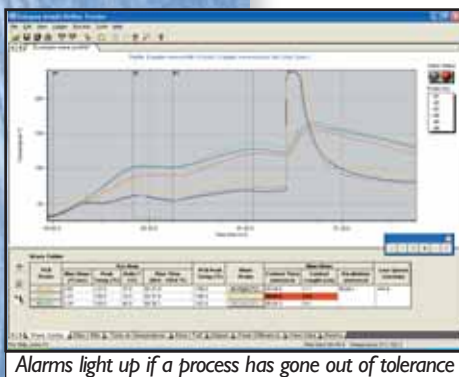
- Contact time (left, right and center)
- Contact length (left, right and center)
- Parallelism
- Line speed

Alarms if the profile is out of tolerance:

The software is configured to light an alarm, if the results are out of limits in the wave or pre-heat area.

Software Wizards:

Wizards are designed to guide you step-by-step through a particular process, while at each step giving you the opportunity to 'back up' to a previous step. They also reduce new operator training.

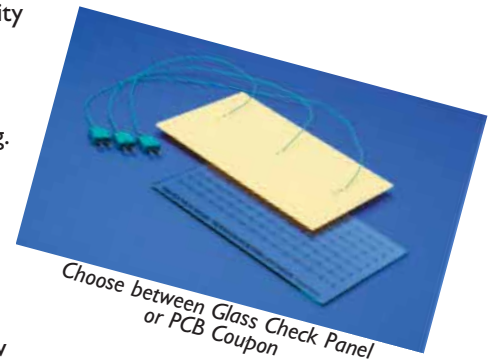


Alarms light up if a process has gone out of tolerance

Technical Specifications

The Datapaq approach is to offer you maximum flexibility when selecting how to monitor the wave process:

- Datapaq Wave Solder Pallet with integral PCB Coupon - for regular repeatable process monitoring.
- Datapaq Wave Solder Pallet with remaining thermocouples attached to customer product for monitoring wave stability and actual PCB/component temperatures in the process.



Use Insight analysis software to monitor both the reflow soldering and wave soldering processes. This reduces the needs for operator training on multiple systems and ensures consistency of data throughout the manufacturing area. The software is fully network compatible, enabling profile data to be shared within the same site.

CS3070 Wave Solder Pallet fitted with 3 thermocouples and a PCB Coupon
Enables reliable and repeatable monitoring of the pre-heat and wave soldering processes. Consists of the pallet fitted with PA1321, PA1320 thermocouples and CS3072 PCB Coupon.

Dimensions (HxWxL): 1.58"x11.8"x13.8"
40mm x 300mm x 350mm
Can also be fitted with CS3071 Wave Glass Check Panel.

CS3071 Wave Glass Check Panel
To be used with CS3070.
Enables quick visual check of wave contact, length and uniformity.

Dimensions: 7.8" x 5.12"
198mm x 130mm

CS3072 PCB Coupon
Fitted with 3 type K thermocouples. To be used with CS3070.
Enables Datapaq system to measure the top and bottom pre-heat temperatures in the wave process.

PA1320/1 Wave Thermocouples
Thermocouples for use on CS3070 Wave Solder Pallet.

SW5060 ReflowTracker Insight Software

The wave solder analysis pallet is designed for use with the Reflow Tracker Insight software. It is compatible with the full range of Q18 data loggers with the exception of the DQ1861. Datapaq provides a wide range of data loggers and thermal barriers to suit nearly any reflow or wave solder application. Please contact us for more information.



North and South America
DATAPAQ Inc.
187 Ballardvale Street
Wilmington, MA 01887
Tel: (978) 988-9000
Fax: (978) 988-0666
e-mail: reflow@datapaq.com

Europe and Asia
DATAPAQ Limited
Deanland House, 160 Cowley Road,
Cambridge CB4 0GU, UK
Tel: +44 (0)1223 423 141
Fax: +44 (0)1223 423 306
e-mail: sales@datapaq.co.uk