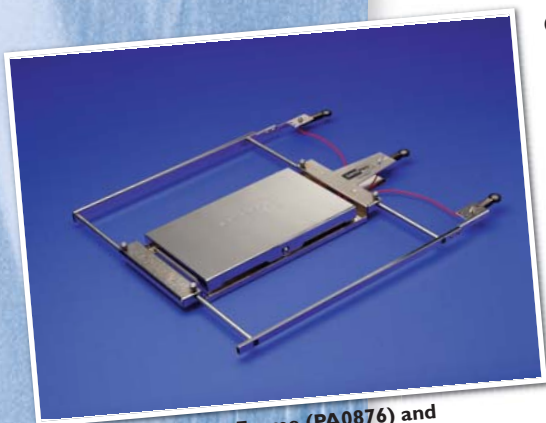


# DATAPAQ Surveyor™

for frequent, accurate monitoring of your reflow oven performance

The Datapaq Surveyor provides an easy and accurate way to monitor the thermal performance of your reflow oven. With its fixed special sensors, adjustable frame and analysis software the Surveyor can identify out of tolerance conditions before they become a problem. This system eliminates your need for test boards, while simplifying your profiling process.

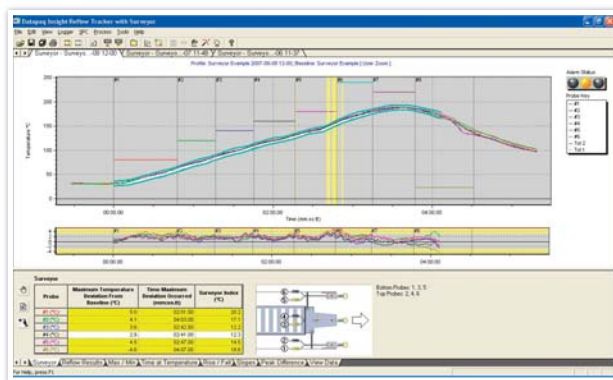


Surveyor Frame (PA0876) and Thermal Barrier (TB2015)

Once the correct profile has been set up, the Surveyor is passed through the oven to establish a baseline profile. Subsequent checking of the oven performance against the baseline is easily conducted by line operators. Any change in performance is detected by the automatic analysis software and a clear indication given.

- Provides quick go/no go result for line operators
- Compatible with lead free soldering profiles
- Available as an upgrade for existing DATAPAQ users and as an option on new systems

Files Selected		Collection Started	Result
Name			
Surveyor Example 2007-08-03 11-24 .paqp		8/3/2007 11:24:52AM	●●●●●
Surveyor Example 2007-08-03 11-37 .paqp		8/6/2007 11:37:00AM	●●●●●
Surveyor Example 2007-08-03 11-48 .paqp		8/7/2007 11:48:44AM	●●●●●
Surveyor Example 2007-08-03 12-00 .paqp		8/8/2007 12:00:05PM	●●●●●
Surveyor Example 2007-08-09 12-13 .paqp		8/9/2007 12:13:48PM	●●●●●



## SOFTWARE SO SIMPLE ... IT DOES THE ANALYSIS FOR YOU

**Automatic analysis** and simple-to-interpret traffic light indicators, show immediately whether the profile was within tolerance or not.

**Surveyor Wizards** guide users step-by-step through the software enabling unskilled operators to obtain consistent and reliable profile data.

**SPC (Statistical Process Control) Calculations** enable the Technician to monitor oven performance over time, and use the software to advise whether the profile will be out of tolerance in the future.

**DATAPAQ**  
www.datapaq.com

**REFLOW OVEN TEMPERATURE PROFILING HAS NEVER BEEN SO EASY!**

# Technical Specifications

## SURVEYOR FRAMES



Surveyor Frame (PA0876)

### PA0872 - For use with Q18 data logger (DQ1861)

Width: 3.97" to 8.11" / 101mm to 206mm  
Height: 1.20" / 32mm\*  
Length: 20.5" / 521mm  
Weight: 1.5 lbs / 0.7kg

### PA0874 - For use with Q18 data logger (DQ1862/DQ1810)

Width: 3.90" to 8.03" / 99mm to 204mm  
Height: 1.26" / 32mm\*  
Length: 17.37" / 441mm  
Weight: 1.1 lbs / 0.5kg

### PA0876 - For use with Q18 data logger (DQ1860)

Width: 5.87" to 13.59" / 149mm to 345mm  
Height: 1.06" / 27mm\*  
Length: 13.59" / 385mm  
Weight: 1.8 lbs / 0.8kg

\*depends on thermal barrier used



Thermocouple Sensors (PA0850)

## THERMOCOUPLE SENSORS - PA0850 SERIES

Each system has 6 specially designed thermocouple sensors that combine robust design with rapid cool down times allowing frequent use. These sensors will detect changes in oven performance before it affects product quality and they won't degrade with use.

## DATAPAQ SURVEYOR SOFTWARE

The Surveyor software is an add-on option to Reflow Tracker Insight providing a fully integrated solution for frequent oven monitoring and detail profiling. This approach means only one software is required to accomplish all of the oven profiling needs and minimizes training requirements while maintaining full functionality.

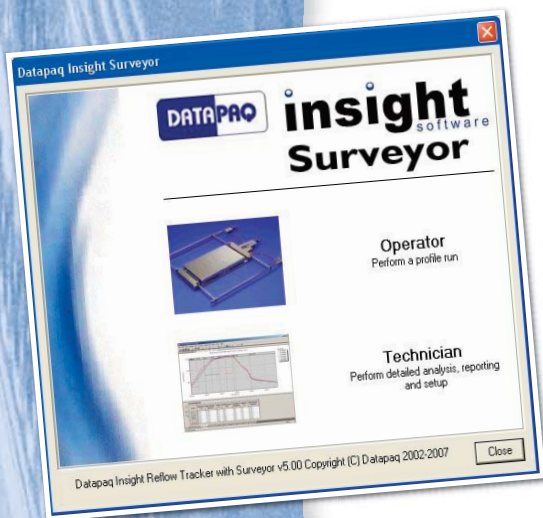
The software operates on two levels of access:

- **The Operator** is guided step by step through the automatic set up and analysis functions eliminating the possibility of error and ensuring maximum reproducibility of results. This results in trouble free frequent process checking
  - **The Technician** has full access to all of the in depth analysis, file management and SPC tools within the software. This access can be password protected to prevent erasure or loss of information due to use by in-experienced/unauthorized users
- As a guide, the following minimum computer specification is recommended:

**Processor:** Pentium II 300MHz.

**RAM:** 128Mb

**Operating System:** Windows™ 2000 or above.



www.datapaq.com

### North and South America

DATAPAQ Inc.  
187 Ballardvale Street  
Wilmington, MA 01887  
Tel: (978) 988-9000  
Fax: (978) 988-0666  
e-mail: reflow@datapaq.com

### Europe and Asia

DATAPAQ Limited  
Deanland House, 160 Cowley Road,  
Cambridge CB4 0GU, UK  
Tel: +44 (0)1223 423 141  
Fax: +44 (0)1223 423 306  
e-mail: sales@datapaq.co.uk