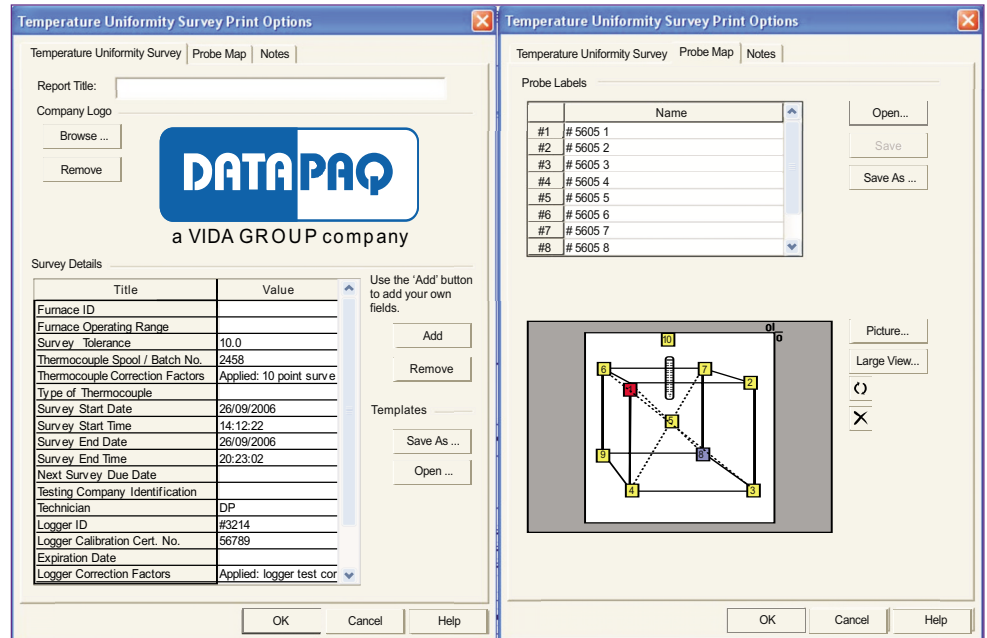


DATA PAQ
 DATA PAQ
 DATA PAQ
 DATA PAQ

insight™ Survey Software for Furnace Tracker (Version 3.5)

AMS 2750D Compliance



Confirm your furnace is in compliance with AMS 2750D

Datapaq's new Insight Survey Software™ confirms compliance to all required specifications plus additional features to make conformity easy

AMS 2750D Requirements

- ▶ **Wizard-driven Set Up Logger Correction Factors** - Set up factors and save them for easy application to future surveys. Prompts direct you to perform this required step
- ▶ **Calculate Stability** - Over-shoot alarm and three selectable alerts tell you when stability is reached
- ▶ **Correction Factors** - Software confirms both data logger and thermocouple corrections have been applied
- ▶ **Complete AMS 2750D documentation** - One-click full report saves time while maintaining consistency
- ▶ **Password Protection** - Meets required security requirement
- ▶ **Import from Clipboard** - Easily import control thermocouple data into survey paqfile

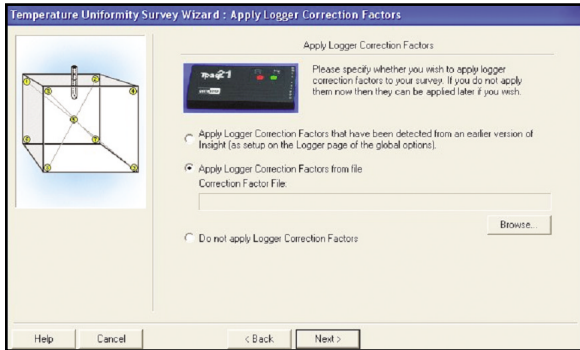
Added Features

- ▶ **Controlling Specification**
 Compares controlling specification tolerances with survey results to determine furnace class
- ▶ **Hottest and Coldest Points Identified**
 An instant visual indication of the hottest and coldest points of the furnace highlighted both on-screen and in the printed report
- ▶ **Recovery Time Data**
 Provides an automatic calculation of the time between the first and last thermocouple entering the lower tolerance band
- ▶ **Area Under Curve Calculation**
 Eliminates the need to export the data to a spreadsheet
- ▶ **Restrict Display Intervals**
 Allows user to print longer intervals for a shorter report



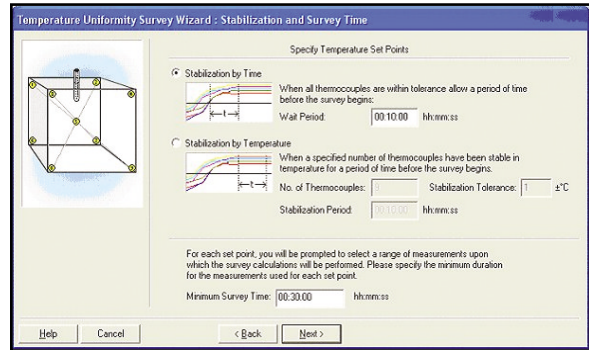
Key Functions

Apply Logger Correction Factors



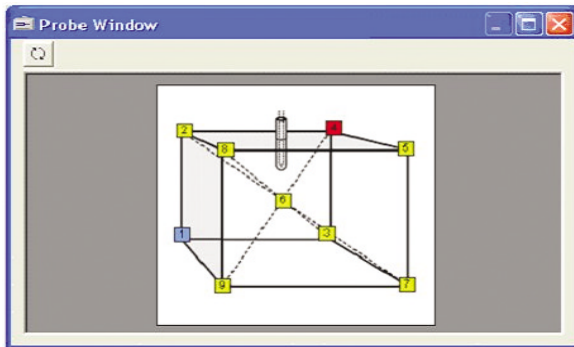
Wizard prompts users to apply mandatory instrument correction factors during set up

Stabilization and Survey Time



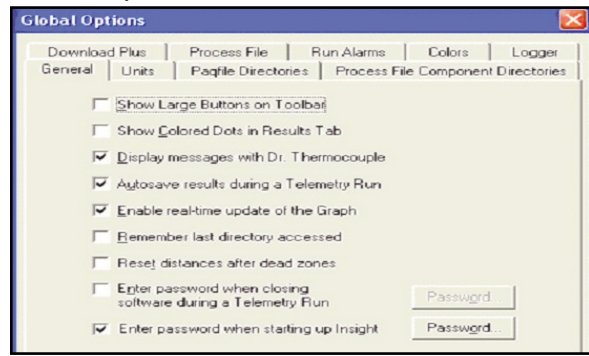
Calculate stability by time or temperature

Probe Window



Display hottest and coldest points around the furnace

Global Options



Password protection as required also provides extra security

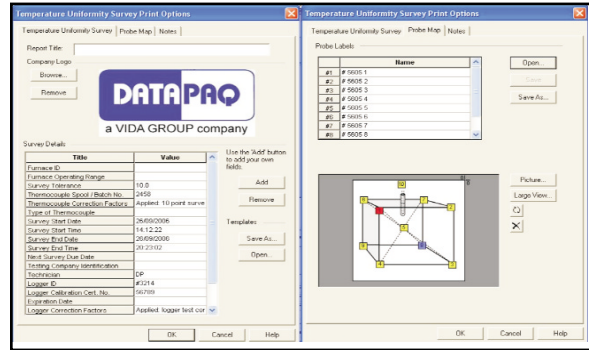
Correction Features Applied

Time (hh:mm:ss)	#6 (°C)	#7 (°C)	#8 (°C)	#9 (°C)	#10 (°C)
05:00:00	1025.8	1024.8	1025.8	1025.8	1025.8
05:10:00	1027.8	1026.8	1028.3	1028.8	1027.9
05:20:00	1026.4	1025.8	1027.5	1027.9	1027.9

Thermocouple Correction Factors applied
 Logger Correction Factors applied

Software confirms both data logger and thermocouple corrections have been applied

Temperature Uniformity Survey Print Options



Full documentation of all AMS 2750D requirements

Suggested Minimum System Requirements:

- Windows® 95, 98, ME, 2000, NT & XP
- Pentium II processor @ 300 MHz
- 64MB RAM
- 1024 x 768 Display
- 20 MB free hard disk space
- Serial port (9pin) for logger communications
- Compatible with Loggers; Tpaq21, Datapaq 9000, Tpaq, and Datapaq 11



www.datapaq.com

North and South America

DATAPAQ Inc.
 187 Ballardvale Street
 Wilmington, MA 01887
 Tel: (978) 988-9000
 Fax: (978) 988-0666
 e-mail: furnace@datapaq.com

Europe and Asia

DATAPAQ Limited
 Dearland House, 160 Cowley Road,
 Cambridge CB4 0GU, UK
 Tel: +44 (0)1223 423 141
 Fax: +44 (0)1223 423 306
 e-mail: sales@datapaq.co.uk