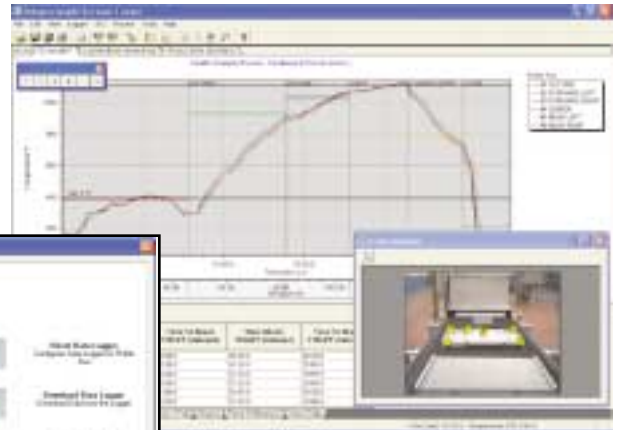


DATA PAQ
DATA PAQ
DATA PAQ
DATA PAQ

insight software™ for Furnace Tracker

Software as Simple as Click and Print

Datapaq once again set a new standard for temperature profiling software. Designed for all user levels, the software starts in Wizard mode and guides the user through the basic setup of a furnace profile. For the line operator, the Download Plus feature downloads, analyzes, stores, and prints your Standard Report with a single click. New 32 Bit system architecture allows any file naming convention, and can be read in Windows™ Explorer for easier file storing, copying, moving, and emailing. Alarms automatically alert the user when a process comes too close to acceptable tolerances. You can't miss them!



Temperature Profiling Has Never Been Easier

- Download Plus does it all in one click of the mouse. A complete analysis can be done and saved by anyone!
- Insight Wizards guide you step-by-step through all the frequently used profiling functions. Training and setup time is significantly reduced.
- Open Multiple Paqfiles and instantly compare data from one run to another.
- Analysis Tabs run along the bottom of the screen (similar to Microsoft™ Excel) to facilitate the following functions: Max/Min, Time at Temperature, Rise/Fall, Slopes, Peak Difference, Temperature Uniformity Survey, View Data and Alarms.
- Set up Process Files with furnace, product and recipe information with the help of a Wizard. These details are saved and can be modified at any time.
- On-Screen Help - each screen has a context sensitive help button that will take you directly to the help category for that function.
- Setup your own 'alarm' system to alert you when a process is out of specification.

Survey Quickly and Easily Without Interruption

- Surveying furnaces during production allows the user to continuously run the furnace without have to shut it down for cooling.
- Calibrated thermocouples placed strategically in the furnace guarantee the temperatures set are within the "working range".
- During the survey automatic calculations are performed to confirm the uniformity of the furnace.
- Survey results can be easily output for a hard copy to be kept on file.
- To ensure validity, audit trails on the data are generated to give users the added assurance that the results have not been tampered with.

Powerful Software for the Experienced User

- Telemetry - using RF transmission, or hard wired - you can see what is happening inside the furnace in real time
- Calibration Reminder - let you know when your logger is due for calibration - important for ISO 9000 traceability
- Tolerance/Reference Curve Overlay, Advanced Data Export/Import, Enhanced Process Files and Customized Reporting.
- Data can be exported to Microsoft™ Excel/Word, and can also be imported.
- Files easily located and emailed
- All previous paqfiles easily read with Insight.

DATA PAQ

Key insight software Functions

Paqfile Tab
Open multiple files together

Probe Toolbar
Switch On/Off

Profile QA
PASS (Green/White) FAIL (Red/White)

Mouse Zoom

Distance Axis

Splitter Bar
Resize View

Options

Analysis Tabs

Analysis (with Red Alarm Markers)

Probe Image

Notes

Dryer

Brazing Zone

Table of Temperatures

Probe	Element	Start (to Search)	Element	Start (to Search)	Upper Limit	Lower Limit
1	1450°F (788°C)	00:00	1450°F (788°C)	00:00	1450°F	1450°F
2	1450°F (788°C)	00:00	1450°F (788°C)	00:00	1450°F	1450°F
3	1450°F (788°C)	00:00	1450°F (788°C)	00:00	1450°F	1450°F
4	1450°F (788°C)	00:00	1450°F (788°C)	00:00	1450°F	1450°F
5	1450°F (788°C)	00:00	1450°F (788°C)	00:00	1450°F	1450°F
6	1450°F (788°C)	00:00	1450°F (788°C)	00:00	1450°F	1450°F
7	1450°F (788°C)	00:00	1450°F (788°C)	00:00	1450°F	1450°F
8	1450°F (788°C)	00:00	1450°F (788°C)	00:00	1450°F	1450°F
9	1450°F (788°C)	00:00	1450°F (788°C)	00:00	1450°F	1450°F
10	1450°F (788°C)	00:00	1450°F (788°C)	00:00	1450°F	1450°F

Process Details

Overview | Furnace | Recipe - Settings | Recipe - Takeover | Recipe - Analysis | Product

Process Name:

Process Summary

Furnace:

Probe:

Product:

Process Files

Create templates that describe your furnace processes.

Set up a process just once to avoid repetitive input, making operation quicker and easier.

The template is automatically applied to your profile for complete error proof analysis.

Suggested Minimum System Requirements:

- Windows® 95, 98, ME, 2000, NT & XP
- Pentium II processor @ 300 MHz
- 64MB RAM
- 1024 x 768 Display
- 20 MB free hard disk space
- Serial port (9pin) for logger communications
- Compatible with Loggers; Tpaq21, Datapaq 9000, Tpaq, and Datapaq 11



A VIDA GROUP company
www.datapaq.com

North and South America

DATAPAQ Inc.
187 Ballardvale Street
Wilmington, MA 01887
Tel: (978) 988-9000
Fax: (978) 988-0666
e-mail: furnace@datapaq.com

Europe and Asia

DATAPAQ Limited
Deanland House, 160 Cowley Road,
Cambridge CB4 0GU, UK
Tel: +44 (0)1223 423 141
Fax: +44 (0)1223 423 306
e-mail: sales@datapaq.co.uk